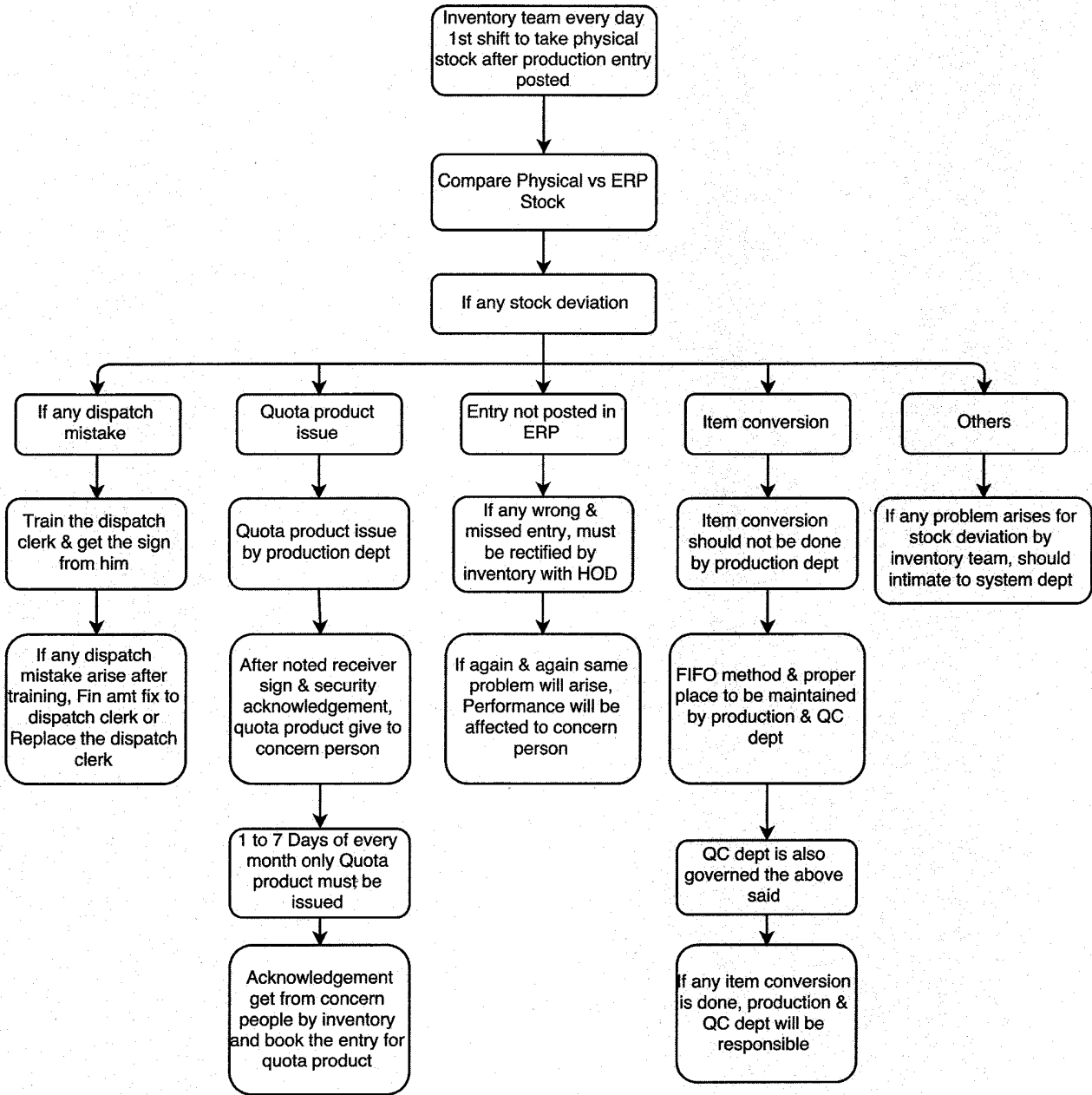


Physical Stock not tally with ERP Stock

Inv - 4



Note: QTA statement prepared without contra different & deviation by inventory. If any deviation in QTA after process loss must rectify with HOD of inventory & Accounts by inventory team

[Signature]
Prepared by

[Signature]
20/04/2017
Validated by

[Signature]
User

[Signature]
Functional head